



ORIENTAL MEDICAL EQUIPEMENT
12 Rue Hammadi Ahmed, Promotion Khaled Boudiaf,
Sétif 19000 Algérie
Tel: (+213) 36 616 205 Fax: (+213) 36 616 201
E-mail: contact@orientalmedicalequipementdz.com
Web: <https://www.orientalmedicdz.com/>



With over 20 years of experience, Mindray hosts a wide range of ultrasound imaging solutions including cart-based and portable systems. Being exported to over 190 countries, Mindray ultrasound systems are today being used by medical professionals for general as well as highly dedicated clinical utility. With a global R&D base spanning over Asia, Europe and America, the ultrasound solutions by Mindray are a result of an integral cooperation with the medical community, allowing for the ultrasound systems to be extremely user centric in terms of performance and usability. Mindray is well positioned to become one of the leading ultrasound imaging solutions provider.



DC-30

Diagnostic Ultrasound System

Capable | Versatile | Smart

Mindray Building, Keji 12th Road South,
High-tech Industrial Park, Nanshan, Shenzhen 518057, P.R. China
Tel: +86 755 8188 8998 Fax: +86 755 26582680
E-mail: intl-market@mindray.com www.mindray.com

mindray | healthcare within reach are registered trademarks or trademarks owned by Shenzhen Mindray Bio-medical Electronics Co., LTD.
© 2015 Shenzhen Mindray Bio-Medical Electronics Co., Ltd. All rights reserved. Specifications subject to changes without prior notice.
P/N:ENG-DC-30-210285X8P-20160324





Scanning with higher performance

Standard ultrasound systems available today typically allow for a basic diagnosis but lack advanced functionality. Now, with the most competitive price in the industry, the DC-30 is the perfect answer for high-quality image performance, with added features such as Auto IMT, iScape™, 4D imaging, Natural Touch Elastography, UWN Contrast Imaging, and Tissue Doppler Imaging.

Phase Shift Harmonic

Phase Shift Harmonic (PSH) Imaging, commonly known as Purified Harmonic Imaging, plays an important role in ultrasonic non-linear imaging. The PSH technique enables reduced noise, resulting in images with higher contrast resolution.

iClear

iClear speckle-reduction imaging technology reduces the image speckle noise and acquires clearer and sharper lesion contours.

iBeam

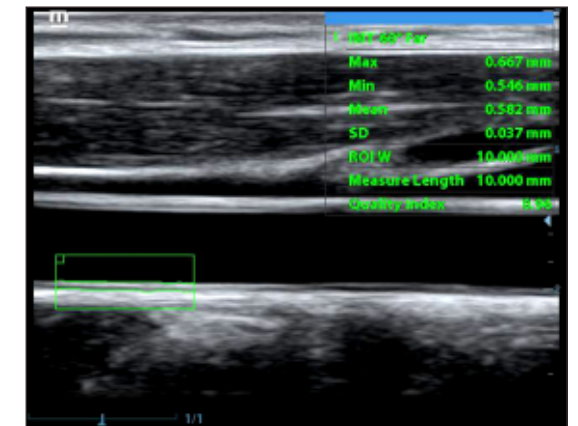
iBeam spatial-compounding imaging technology permits use of multiple transmitting angles to form a single image, resulting in enhanced contrast resolution and improved visualization.



Advanced function within reach

Auto IMT

Auto IMT (Intima Media Thickness) automatically detects and calculates the thickness of carotid intima-media. With a comprehensive IMT report, auto IMT facilitates an accurate and efficient assessment of carotid condition.

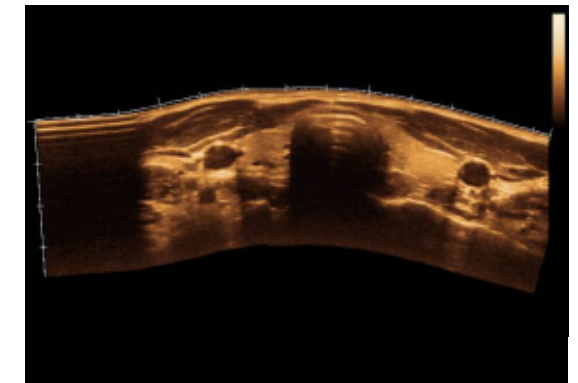


Auto IMT

iScape™

(Real-time Panoramic Imaging)

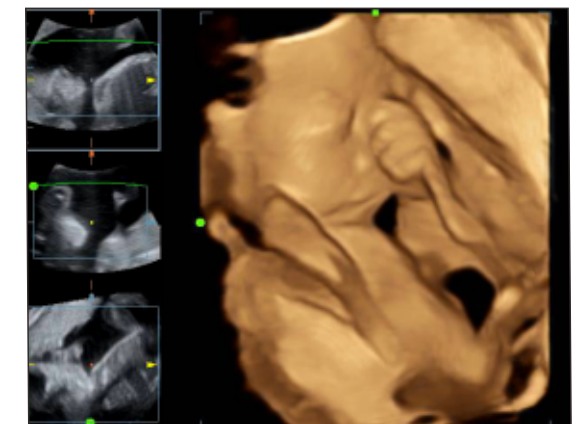
iScape allows exceptional visualization of anatomical structures relationships over an extended view of anatomy.



iScape of Thyroid

4D Imaging & iPage™

For better obstetric diagnosis, the DC-30 delivers practical and valuable 3D/4D images. With iPage™ (multi-slice view) function, different views of fetal structures are much easier to acquire from one set of volume data.



3D Fetal Face



ORIENTAL MEDICAL EQUIPEMENT
12 Rue Hammadi Ahmed, Promotion Khaled Boudiaf,
Sétif 19000 Algérie
Tel: (+213) 36 616 205 Fax: (+213) 36 616 201
E-mail: contact@orientalmedicalequiptendz.com
Web: <https://www.orientalmedicdz.com/>



ORIENTAL MEDICAL EQUIPEMENT
12 Rue Hammadi Ahmed, Promotion Khaled Boudiaf,
Sétif 19000 Algérie
Tel: (+213) 36 616 205 Fax: (+213) 36 616 201
E-mail: contact@orientalmedicalequiptendz.com
Web: <https://www.orientalmedicdz.com/>



Natural Touch Elastography

Based on Mindray's exclusive technology, Natural Touch Elastography reduces dependence on user operation technique, improving reproducibility for increased clinical utility.

UWN Contrast Imaging

Mindray's unique contrast imaging technology utilizes contrast agent characteristics with both 2nd harmonic and non-linear fundamental signals to get an improved S/N ratio for better diagnostic details and longer contrast agent duration for improved observation.

TDI & Free Xros M

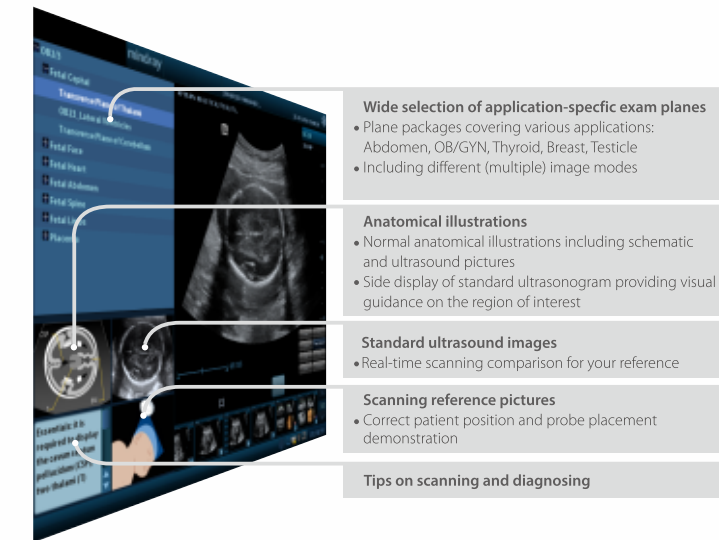
Equipped with advanced functions such as Tissue Doppler Imaging(TDI) and Free Xros M(Anatomic M mode), the DC-30 provides you with practical tools for cardiovascular diagnosis. The TDI package, supporting TVI, TEI, TVM, TVD and integrating well with the Free Xros M, enables quantitative evaluation of myocardial motion and synchronicity.

Advanced function within reach

iScanHelper

(Inbuilt Tutorial Module)

With iScanHelper, practitioners can learn basic scanning knowledge with the operation technique, standard planes, and anatomical information.



MedSight

(Mobile Device App for Image Transferring)

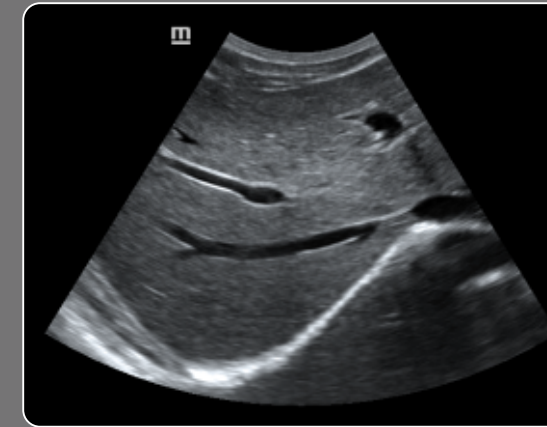
MedSight lets you transfer clinical images and videos to your smart device via an interactive app. This is ideal for a mother-to-be wanting to share the images of the fetus with her family or friends; or for a training session or a discussion with your peers on a rare case. With MedSight you can now take the clinical examinations with you wherever needed.





ORIENTAL MEDICAL EQUIPEMENT
12 Rue Hammadi Ahmed, Promotion Khaled Boudiaf,
Sétif 19000 Algérie
Tel: (+213) 36 616 205 Fax: (+213) 36 616 201
E-mail: contact@orientalmedicalequipementdz.com
Web: <https://www.orientalmedicaldz.com/>

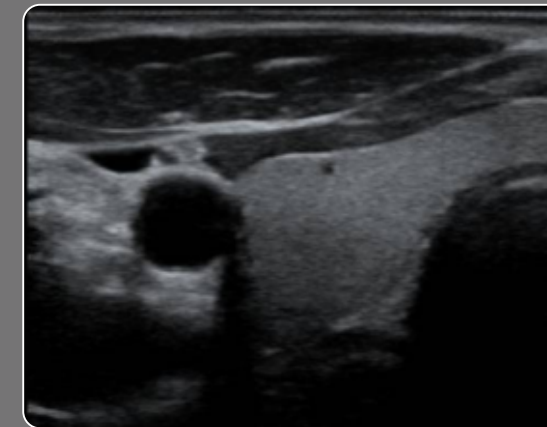
Designed for your needs



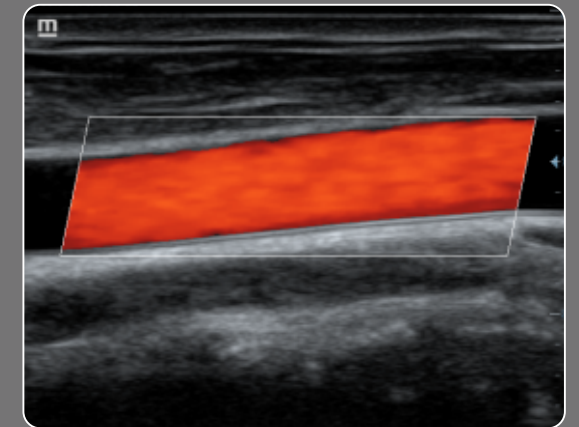
Liver with iClear



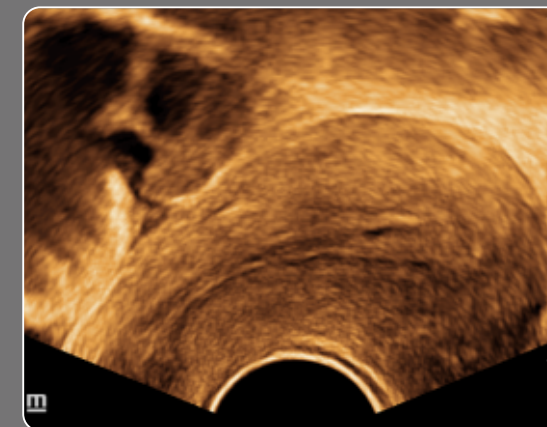
Kidney Perfusion



Thyroid with iBeam



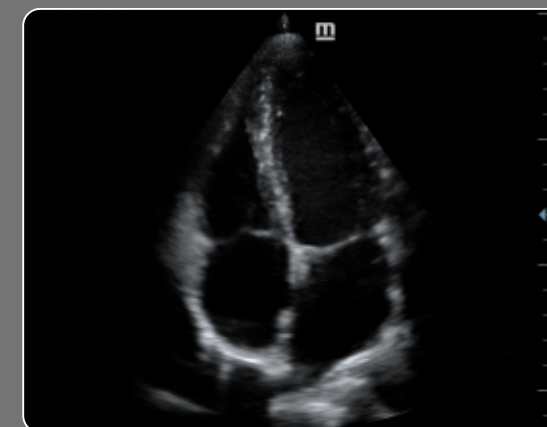
Common Carotid Artery



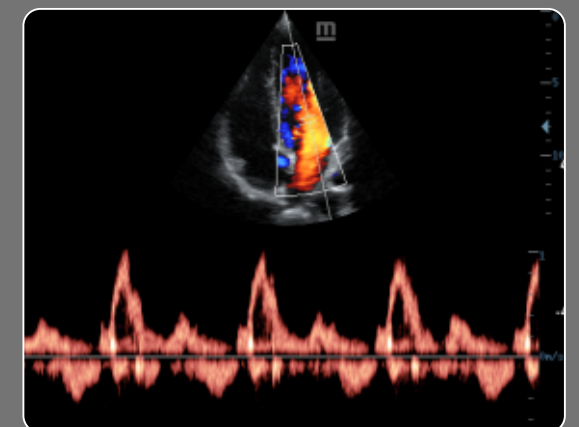
Uterus with PSH



Fetal Head



Four Chamber View



PW of Mitral Wave